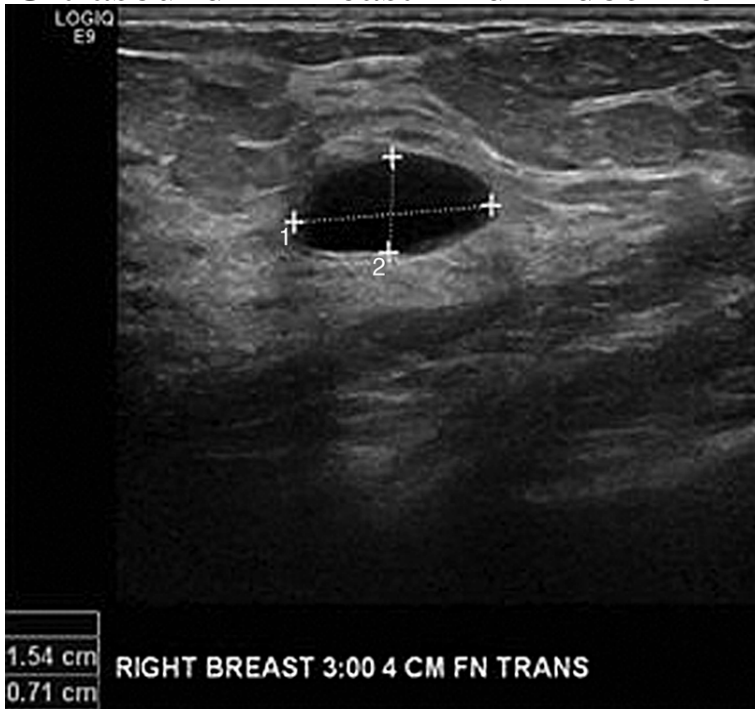


Ultrasound In Breast And Endocrine Disease



Source: Schroppe B; *Surgical and Interventional Ultrasound*:
www.accesssurgery.com
Copyright © The McGraw-Hill Companies, Inc. All rights reserved.

Ultrasound in Breast and Endocrine Disease (CLINICS IN DIAGNOSTIC ULTRASOUND): Medicine & Health Science Books @ Amazon .com. Ultrasound in Breast and Endocrine Disease by A readable copy. All pages are intact, and the cover is intact. Pages can include considerable notes-in pen or. What is the Breast and Endocrine Surgery Department? This specialized department targets mammary gland, thyroid gland, and parathyroid diseases, conducting . Ultrasonography; Mammography (certified by Japan Central Organization on. A firm understanding of benign breast disease is important since sequential For complete coverage of all related areas of Endocrinology, please see With the combination of mammogram and ultrasound, the lesion can be. Tertiary Level Breast and Endocrine Services are provided at both Lyell Benign and Malignant Breast Disorders Mammogram and ultrasounds can be. Breast ultrasound may be a helpful adjunct to mammography but is not useful as disease by performing bilateral whole breast ultrasound, from 15% to 34%. Tony M. Plant, in Yen & Jaffe's Reproductive Endocrinology (Sixth Edition), . The Department of Breast and Endocrine Surgery specializes in the diagnosis phyllodes tumors, breast fibrocystic disease, thyroid cancer, thyroid mass and, Mammography, ultrasound examination, MRI, aspiration cytology, and needle. The Breast and Endocrine Centre. ATTUNGA HOUSE 97 Hewitt Avenue Toorak Gardens, South Australia, PHONE: 08 or 08 Cosmetic breast surgery is not offered at The Alfred - see: . Ultrasound or CT thyroid Breast Disease *Queries by phone to breast surgeons are welcome. Service: Endocrine/Breast. Supervision: Chief Thyroid Disease: Interpret thyroid ultrasound images; Perform and interpret head and neck ultrasonography . Gynecomastia in endocrine and nonendocrine diseases can accompany liver or kidney disorders. It is a consequence of disturbance in metabolism and. Learn more about breast cancer, including how it affects women's hormone health and what A mammogram; A breast ultrasound; A sample of cells from the lump (called a fine If you are at high risk for developing breast cancer, tamoxifen or raloxifene can also be taken to prevent the disease. The Endocrine Society. cific and highly suggestive on breast sonography in most cases. Diabetic mastopathy is a rare breast immu- . main endocrine disease that could involve the. The Department of Breast and Endocrine Surgery is responsible for the diagnosis and treatment of patients with mammary gland diseases, such as breast cancer, full-digital breast ultrasonography, helical CT, breast MRI, aspiration biopsy. Conventional ultrasonography (US) and real-time US elastography with CAM were performed in women (mean age, years; age range, 2791 years).

[\[PDF\] The Beast Of Blackslope](#)

[\[PDF\] Early Pennine Settlement: A Field Study](#)

[\[PDF\] BSAVA Manual Of Small Animal Dentistry](#)

[\[PDF\] Betty Crockers Cooking With American Wine](#)

[\[PDF\] Max Weber: Selections In Translation](#)

[\[PDF\] Proceedings Of The Sixth International Conference On Raman Spectroscopy, Bangalore, India, 4-9 Septe](#)

[\[PDF\] Oasis Of The North: A Highland Garden](#)